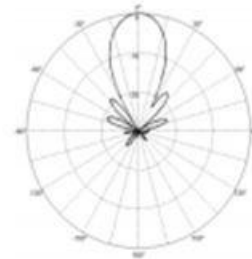


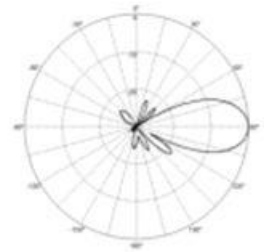
2+2+4 Port ESC Single Beam Lens Antenna

Electrical Specifications

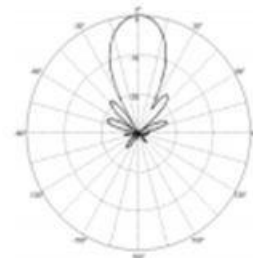
Product Name	2+2+4 Port ESC Single Beam Lens Antenna
Model	EHS1LB105D-R
Frequency (MHz)	1710-1830/1885-2025/2515-2675
Number of Port	2/2/4
Gain (dBi)	$\geq 13.5/\geq 14/\geq 15$
Number of Beam	1
Horizontal Beam Pointing($^{\circ}$)	0
Horizontal 3dB Beam width ($^{\circ}$)	$\geq 27/\geq 25/\geq 23$
Horizontal 10dB Beam width ($^{\circ}$)	
Vertical 3dB Beam width ($^{\circ}$)	$\geq 24/\geq 21/\geq 16$
Vertical 10dB Beam width ($^{\circ}$)	
Beam Crossing (dB)	
Horizontal Coverage($^{\circ}$)	
Sidelobe Suppression	> 15
Front to Back Ratio (dB)	> 25
Polarization ($^{\circ}$)	± 45
Isolation of Polarized Ports (dB)	≥ 25
Isolation of Beam Ports (dB)	
VSWR	≤ 1.5
Input Impedance (Ω)	50
Power Rating (W)	8X100
Intermodulation IM3	$\leq -100/-/-$



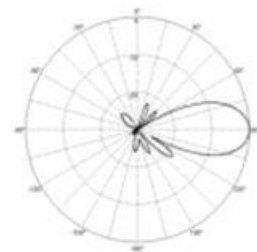
H-plane \leftarrow



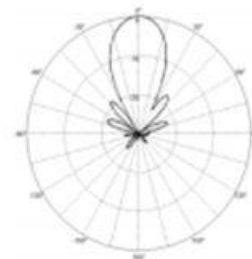
V-plane \leftarrow



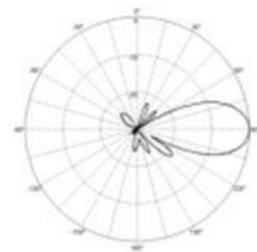
H-plane \leftarrow



V-plane \leftarrow



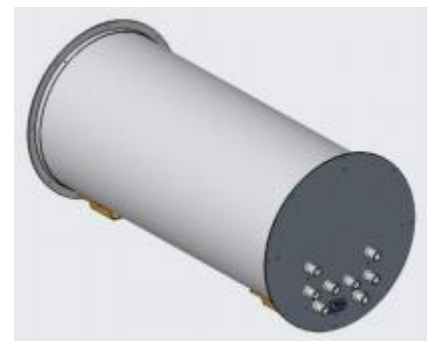
H-plane \leftarrow



V-plane \leftarrow

Mechanical Specifications

Mechanical Down-Tilt ($^{\circ}$)	0~20
Antenna Dimension (mm)	926×400×400
Packaging Dimension (mm)	925×865×1035
Net Weight (Kg)	
Connector	8*7/16DIN-Female
Mounting Pole Diameter (mm)	50-114
Radome Material	ASA+ABS/PVC
Rated Wind Velocity (m/s)	55
Operating Temperature ($^{\circ}$ C)	-40~+70
Operating Humidity	30%~90%
Lighting Protection	DC Ground



Schematic diagram of antenna